



Highlights

- Reduce the time to deliver rich, actionable intelligence products including key geospatial analysis
 - Maximize on investments and resources in geospatial functionalities
 - Leverage available data to build a comprehensive intelligence picture
 - Reduce cross-team dependencies
-

IBM i2 Analyst's Notebook Connector for Esri

Reduce the time required to build a comprehensive intelligence picture with combined geospatial and visual analysis environment

The IBM® i2® Analyst's Notebook® Connector for Esri connects IBM® i2® Analyst's Notebook® or IBM® i2® Analyst's Notebook® Premium with Esri's ArcGIS server in order to integrate link, temporal and geospatial analysis to offer users a comprehensive, robust analysis solution.

From within the Analyst's Notebook environment, users can select a preferred server base map, add multiple dynamic maps, integrate chart items, run geospatial queries to develop data-rich layers and more. The Analyst's Notebook Connector for Esri empowers analysts to more easily identify and focus in on relevant information by providing the technology to view IBM i2 charts as dynamic Esri map layers¹ and integrate map views and existing geospatial data within an ArcGIS server into a chart. The solution is packed with additional capabilities designed to maximize the available data and services within an Esri server, such as route finding, drive time analysis and buffer zoning, helping to ensure that analysts can fully exploit the geospatial resources available to them.



Enrich analytical understanding

Analyst's Notebook Connector for Esri can help build a comprehensive operational picture from one centralized location. Capabilities include:

- Enhance intelligence production with self-service access to an Esri server, virtually eliminating dependencies on the GIS function for basic geospatial analysis
- Map chart data from Analyst's Notebook to the map in order to uncover how locations or topography of incidents impact an investigation
- Integrate map data to the chart to include a three dimensional component to the analysis or to incorporate existing geospatial intelligence within the Esri server to a new investigation
- Focus only on relevant data as isolated information is synchronized and mirrored across the link chart, map, heat-matrix, filters and histograms and other views

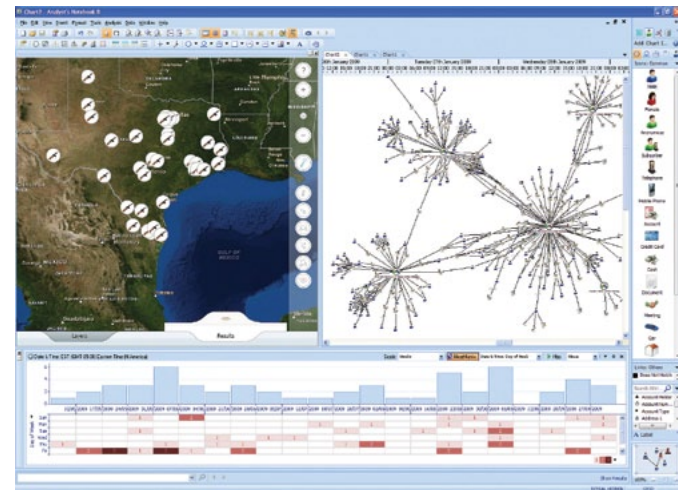


Figure 1: Capitalize on virtually all available data with one analytical picture that combines geospatial, association and temporal analysis

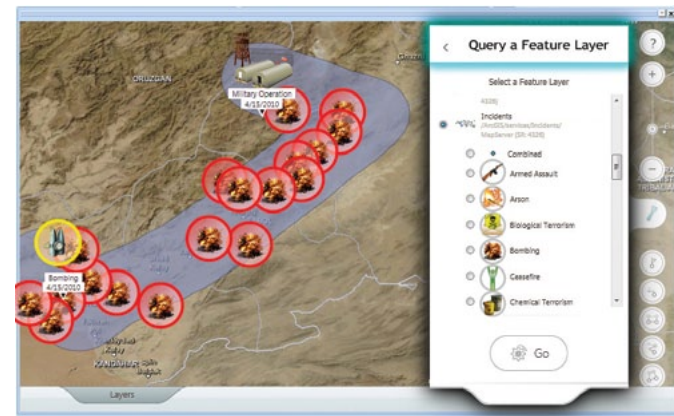


Figure 2: Maximize analysis with a package of unique geospatial analytical capabilities

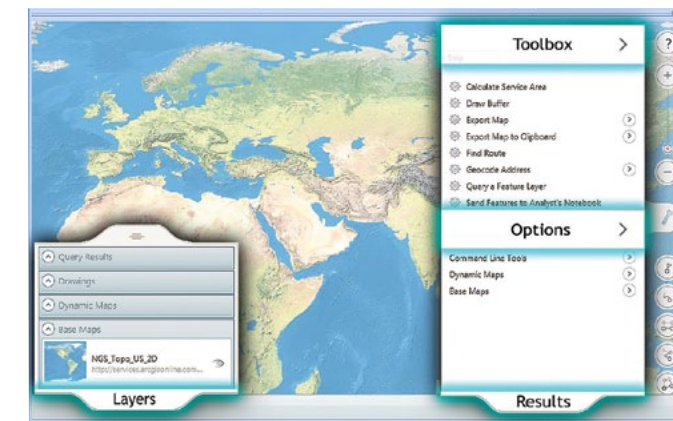


Figure 3: Increase productivity with self service access to the Esri ArcGIS Server and multiple user friendly geospatial functionalities

Help maximize investments and resources with geospatial functionalities¹

Analyst's Notebook Connector for Esri can help maximize investments and resources by helping users to:

- Capitalize on available data by running geospatial queries from areas of interest to extract layers of information stored within available Esri Servers
- Request drive-time analysis to identify and visualize possible distances that can be travelled from a distinct point on the map over specified periods of time
- Hone in on geographical points, routes of interest or establish buffer zones with multiple map drawing tools
- Increase accuracy by finding routes from one point of interest to another across various map layers

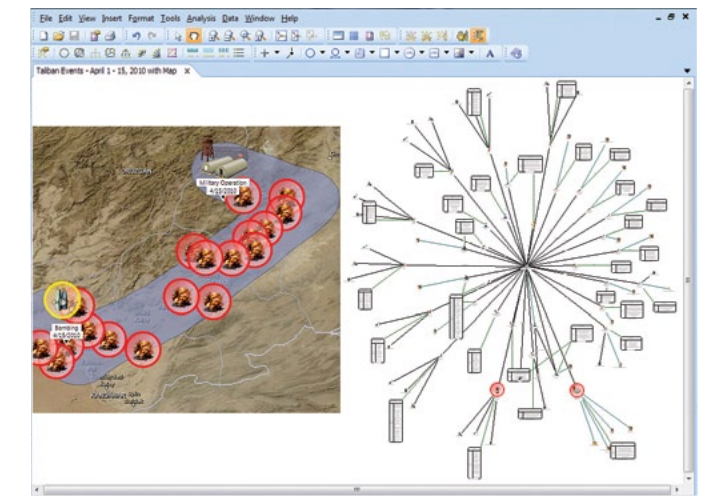


Figure 4: Improve presentations, briefings and reports with geospatial representations of the data

Improve actionable intelligence production, presentations and briefings with geospatial views

Analyst's Notebook Connector for Esri can help users:

- Copy or save map views and insert visualizations into IBM i2 charts, briefings and reports
- Add a crucial layer of actionable information to an investigation with geospatial representations of the analysis
- Strengthen existing intelligence products by incorporating data stored within the Esri server

For more information

To learn more about i2, please contact your IBM representative, or visit: www.ibm.com

To learn more about all of the IBM Smarter Cities solutions, visit: ibm.com/smartercities



© Copyright IBM Corporation 2012

IBM Corporation
Software Group
Route 100
Somers, NY 10589
U.S.A.

Produced in the United States of America

May 2012

i2, Analyst's Notebook, COPLINK, IBM, the IBM logo and ibm.com are trademarks of International Business Machines Corporation in the United States, other countries or both. If these and other IBM trademarked terms are marked on their first occurrence in this information with a trademark symbol (® or TM), these symbols indicate U.S. registered or common law trademarks owned by IBM at the time this information was published. Such trademarks may also be registered or common law trademarks in other countries. Other product, company or service names may be trademarks or service marks of others. A current list of IBM trademarks is available at "Copyright and trademark information" at: www.ibm.com/legal/copytrade.shtml

The content in this document (including currency OR pricing references which exclude applicable taxes) is current as of the initial date of publication and may be changed by IBM at any time. Not all offerings are available in every country in which IBM operates.

The performance data discussed herein is presented as derived under specific operating conditions. Actual results may vary. THE INFORMATION IN THIS DOCUMENT IS PROVIDED "AS IS" WITHOUT ANY WARRANTY, EXPRESS OR IMPLIED, INCLUDING WITHOUT ANY WARRANTIES OF MERCHANTABILITY, FITNESS FOR A PARTICULAR PURPOSE AND ANY WARRANTY OR CONDITION OF NONINFRINGEMENT. IBM products are warranted according to the terms and conditions of the agreements under which they are provided.

- 1 Support for geo processing services is dependent upon access to Esri map data or ArcGIS.com.



Please Recycle